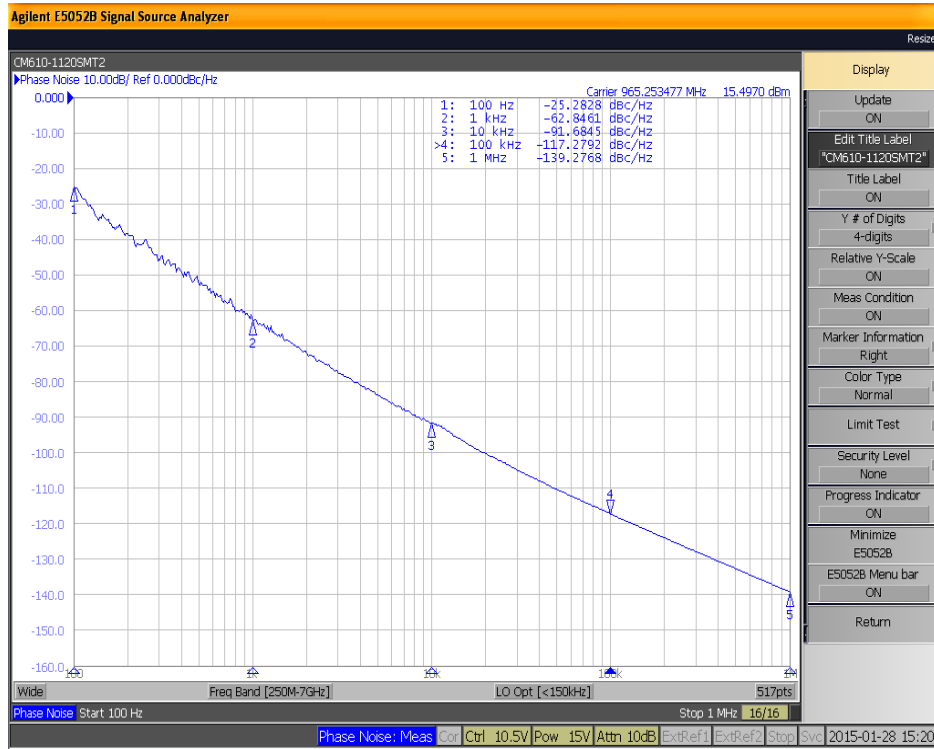


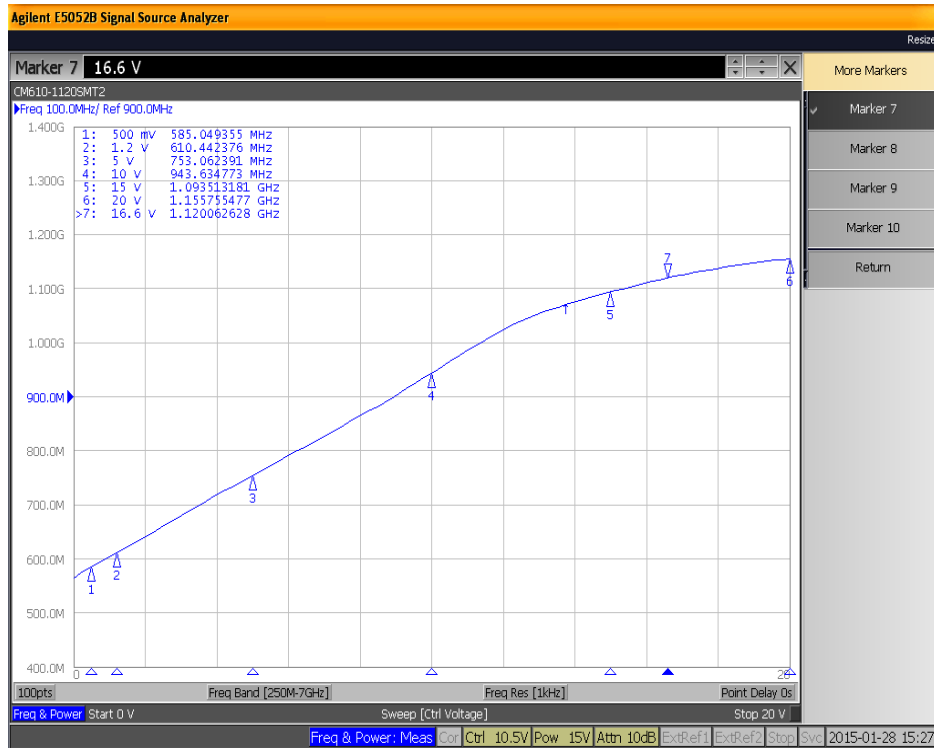
CM610-1120SMT2 SMT2 Package

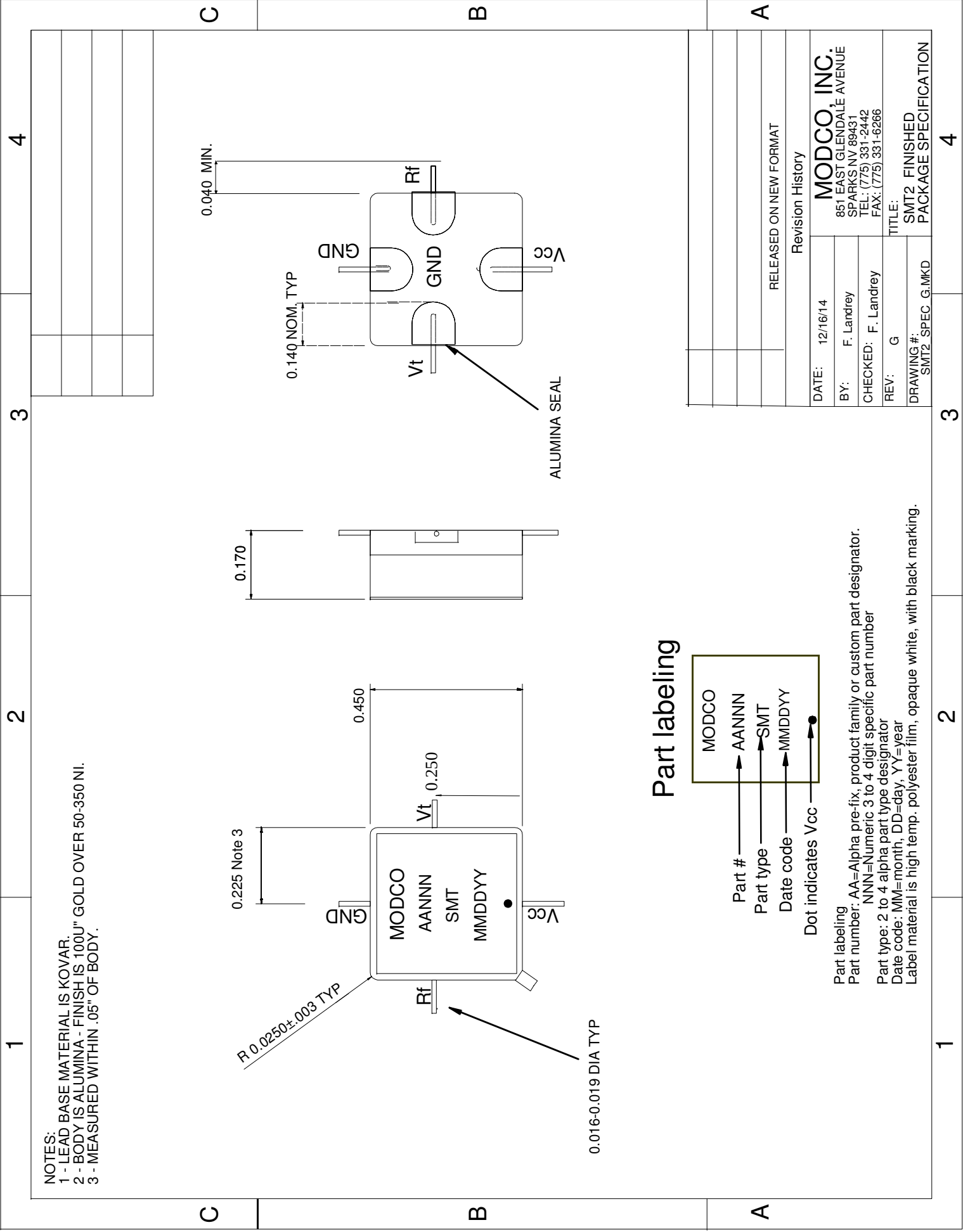
Performance Specification	Min	Typ	Max	Units
Frequency Range	610	-	1120	MHz
Tuning Voltage	0.5	-	19	Vdc
Vcc	14	15.0	16	Vdc
Icc	-	18	20	mA
Output Power	10	+13	+16.5	dBm
2nd Harmonic	-	-25	-18	dBc
Pushing	-	1	2	2
Pulling P-P 14dB Rtn Loss	-	25	40	MHz
Tuning Port Capacitance	-	150	-	pF
Load Impedance	-	50	-	Ohms
Phase Noise @ 1KHz Offset	-	-62	-60	dBc/Hz
Phase Noise @ 10KHz Offset	-	-92	-88	dBc/Hz
Phase Noise @ 100KHz Offset	-	-118	-115	dBc/Hz
Tuning Sensitivity (Kvco)	13	-	39	MHz/V
Frequency Drift @ -40 C	-	-	-	MHz
Frequency Drift @ +85 C	-	-	-	MHz
Power vs Temp @ -40 C	-	-	-	dBm
Power vs Temp @ +85 C	-	-	-	dBm
Operating Temperature	-40	-	+85	C
Storage Temperature	-55	-	+125	C
Package Style		SMT2		

Phase Noise (1 Hz Bandwidth Typ)



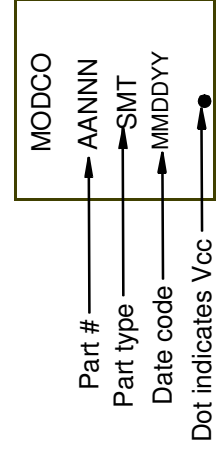
Frequency vs Tuning Voltage





NOTES:
 1 - LEAD BASE MATERIAL IS KOVAR.
 2 - BODY IS ALUMINA - FINISH IS 100U" GOLD OVER 50-350 NI.
 3 - MEASURED WITHIN .05" OF BODY.

Part labeling



Part labeling
 Part number: AA=Alpha pre-fix, product family or custom part designator.
 NNN=Numeric 3 to 4 digit specific part number
 Part type: 2 to 4 alpha part type designator
 Date code: MM=month, DD=day, YY=year
 Label material is high temp. polyester film, opaque white, with black marking.

RELEASED ON NEW FORMAT	
Revision History	
DATE: 12/16/14	MODCO, INC.
BY: F. Landrey	851 EAST GLENDALE AVENUE
CHECKED: F. Landrey	SPARKS NV 89431
REV: G	TEL: (775) 331-2442
	FAX: (775) 331-6266
DRAWING #: SMT2_SPEC_G.MKD	TITLE: SMT2 FINISHED PACKAGE SPECIFICATION

1 2 3 4

C B A

3 4

2

1