

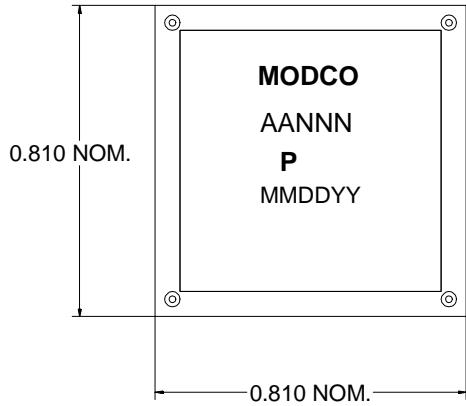
1

2

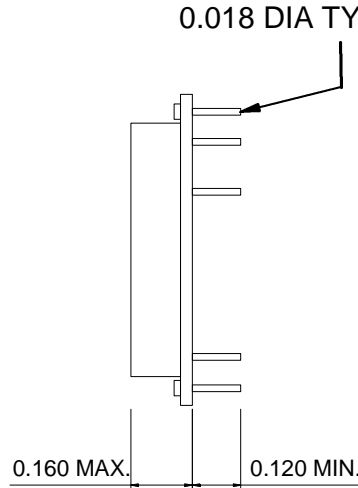
3

4

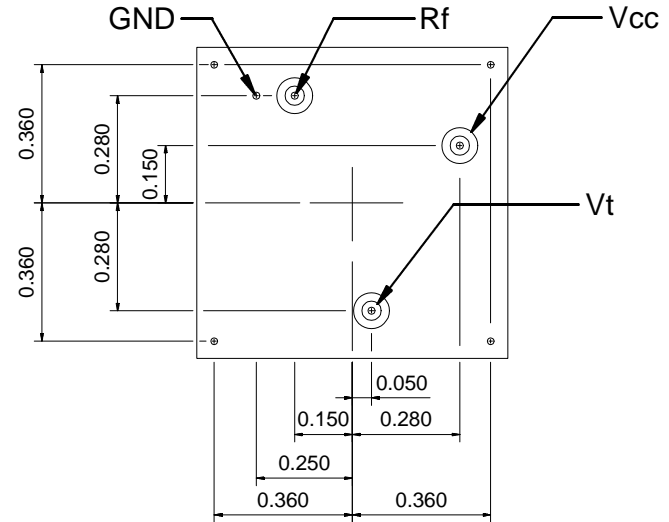
TOP VIEW



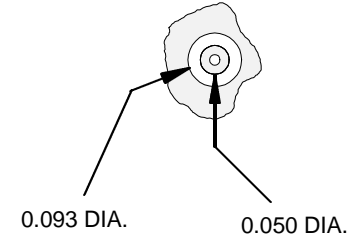
SIDE VIEW



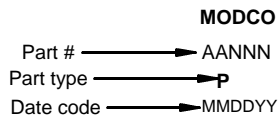
BOTTOM VIEW



I/O PIN DETAIL TYP. 3 PLCS.



Part labeling
 Part number: AA=Alpha pre-fix, product family or custom part designator.
 NNN=Numeric 3 to 4 digit specific part number
 Part type: 2 to 4 alpha part type designator
 Date code: MM=month, DD=day, YY=year
 Label material is high temp. polyester film, opaque white, with black marking.



- Notes:
1. The case is ground. The four corner pins, and pin side metalization are ground except as noted in the detail.
 2. The pin side finish is hot air solder level..
 3. Unless otherwise specified all dimensions are in inches.

B	Updated address from 808 to 806.
A	RELEASED ON NEW FORMAT
Revision History	
DATE:	06/04/03
BY:	D. Johnson
CHECKED:	
REV:	B
DRAWING #:	P_SPEC.mkd
MODCO, INC.	
806 PACKER WAY SPARKS NV 89431 TEL: (775) 331-2442 FAX: (775) 331-6266	
TITLE:	P PACKAGE OUTLINE

1

2

3

4

C

B

A

C

B

A